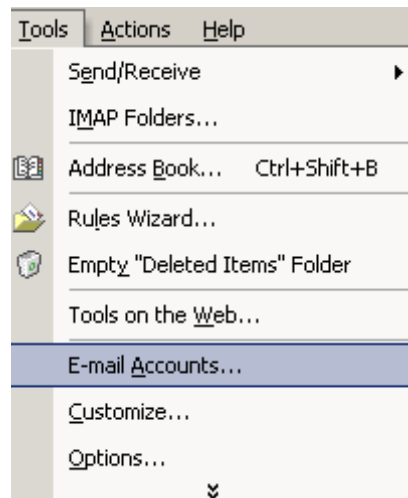
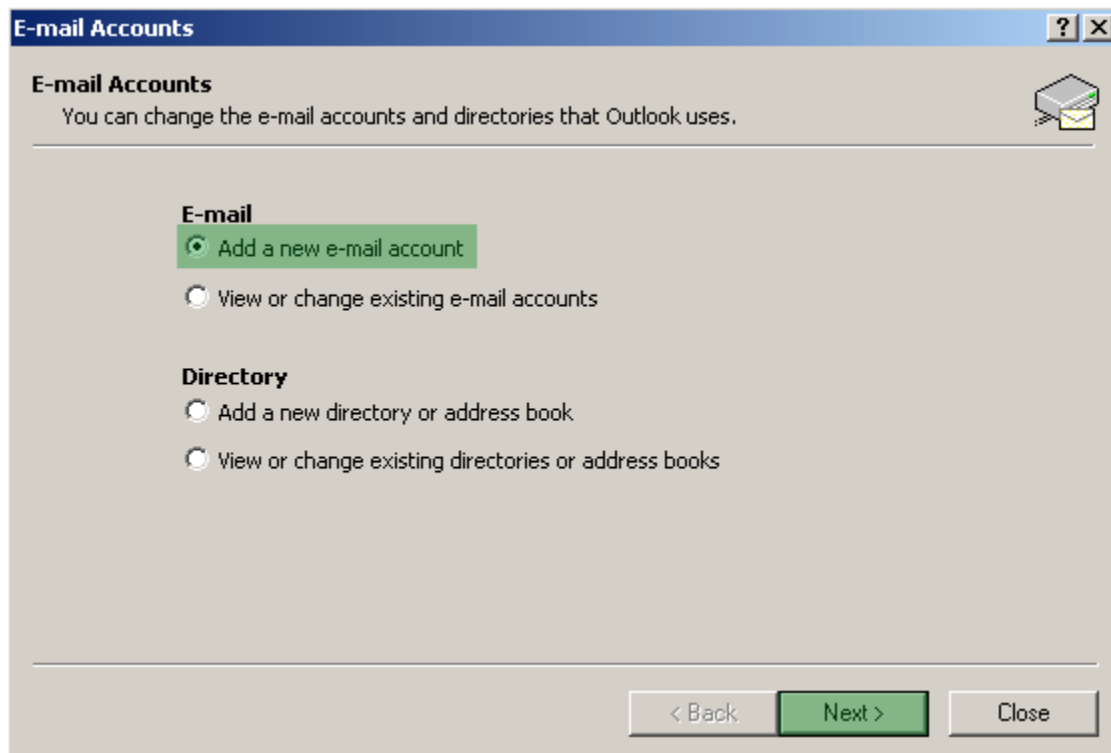


How do I setup Microsoft Outlook 2002/2003 to receive Wireless Hometown e-mail?

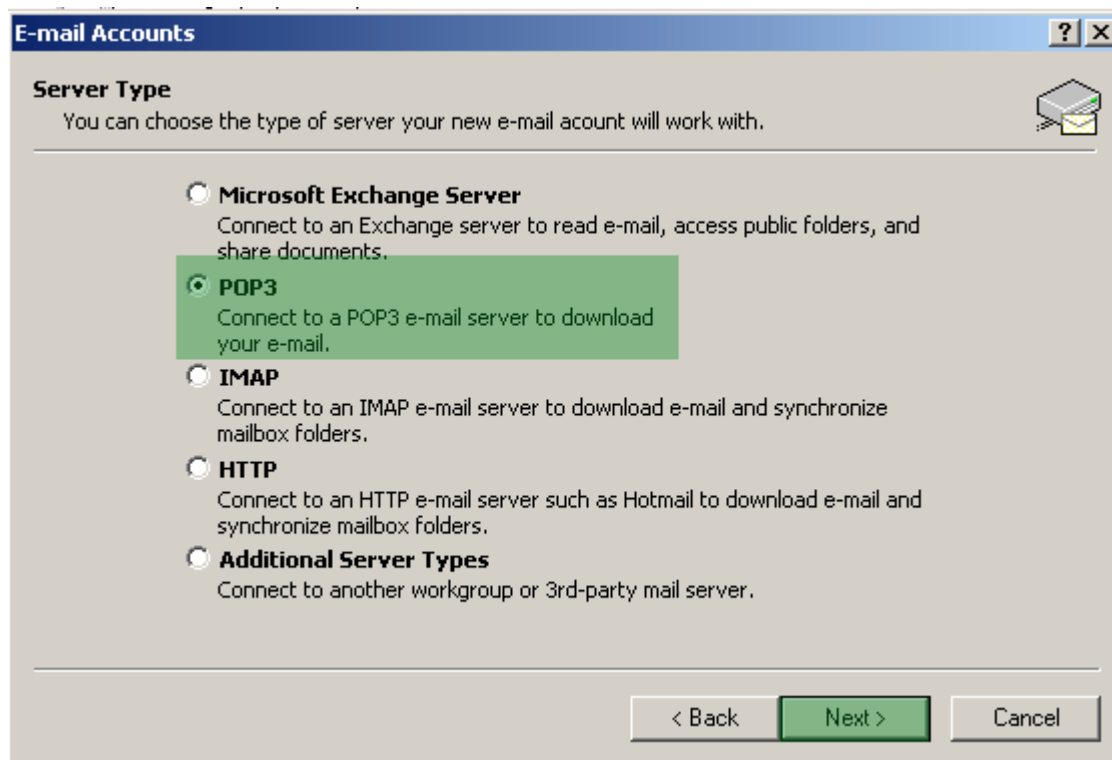
1. Open Microsoft Outlook. Click "Tools" and select "E-mail Accounts"



2. Select "Add a new e-mail account" and click "Next".



3. Choose "POP3" and click "Next".



4. Enter the following information:

- Your Name = The name that you want others to see when they receive email from you (can be different from your email address)
- Email address = Your email address with Wireless Hometown – include the @wirelesshometown.com portion of your email.
- Incoming Server = mail.wirelesshometown.com
- Outgoing server = smtp.wirelesshometown.com
- User Name = Your full email address – include the @wirelesshometown.com portion)
- Password = Your Password. This could be the password you were assigned by Wireless Hometown, the password that you chose when signing up on the WirelessHometown.com signup webpage, or a password that you changed under the 'My Accounts' section of the WirelessHometown.com webpage. As a reminder, the password must have the following criteria to work:
 - It must have at least one uppercase and one lowercase character
 - It must have at least one number
 - It should not be longer than 8 characters/numbers long

(Note: Make sure the box near "Log on using Secure Password Authentication (SPA)" is **Unchecked**)

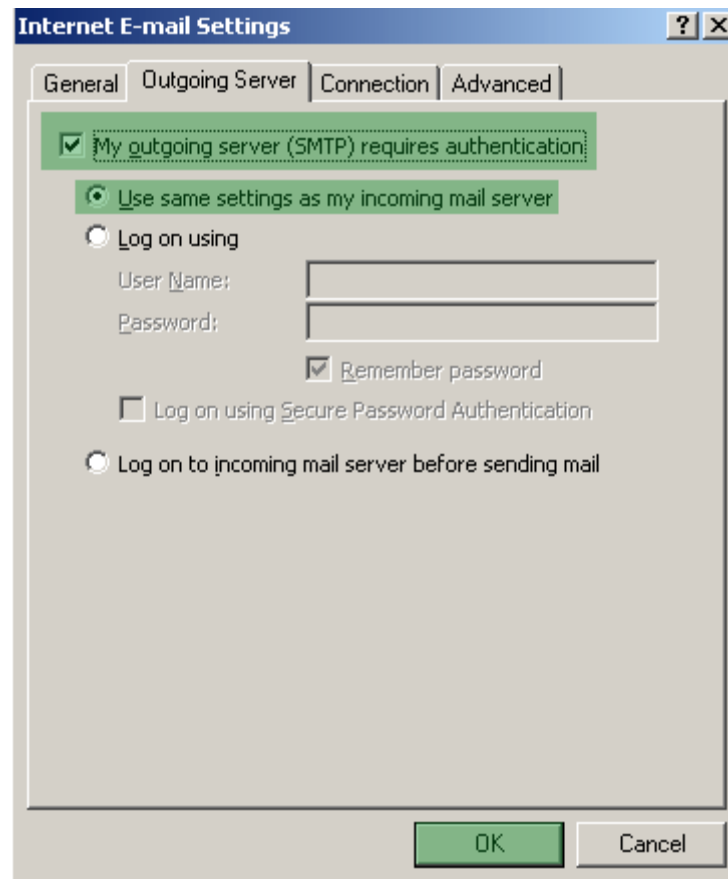
The screenshot shows a window titled "E-mail Accounts" with a sub-header "Internet E-mail Settings (POP3)". Below the sub-header is a note: "Each of these settings are required to get your e-mail account working." The window is divided into four main sections:

- User Information:** "Your Name:" field contains "Hometown User"; "E-mail Address:" field contains "You@wirelesshometown.com".
- Server Information:** "Incoming mail server (POP3):" field contains "mail.wirelesshometown.com"; "Outgoing mail server (SMTP):" field contains "smtp.wirelesshometown.com".
- Logon Information:** "User Name:" field contains "You@wirelesshometown.com"; "Password:" field contains "*****"; there is an unchecked checkbox for "Remember password".
- Test Settings:** A note says "After filling out the information on this screen, we recommend you test your account by clicking the button below. (Requires network connection)". There is a "Test Account Settings ..." button.

At the bottom left, there is an unchecked checkbox for "Log on using Secure Password Authentication (SPA)". At the bottom right, there is a green "More Settings ..." button. At the very bottom, there are three buttons: "< Back", "Next >", and "Cancel".

Click "More Settings".

5. Select "Outgoing Server" tab then check "My Outgoing server (SMTP) requires authentication." and choose "Use same settings as my incoming mail server".



Click "OK" then "Next" and finally "Finish". Your account is setup.